



# ZNF436 Polyclonal Antibody

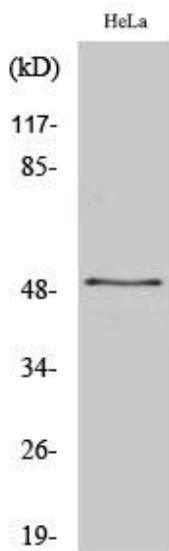
<b>Catalog No</b>	YP-Ab-02188
<b>Isotype</b>	IgG
<b>Reactivity</b>	Human;Rat;Mouse;
<b>Applications</b>	WB;IHC;IF;ELISA
<b>Gene Name</b>	ZNF436
<b>Protein Name</b>	Zinc finger protein 436
<b>Immunogen</b>	The antiserum was produced against synthesized peptide derived from human ZNF436. AA range:71-120
<b>Specificity</b>	ZNF436 Polyclonal Antibody detects endogenous levels of ZNF436 protein.
<b>Formulation</b>	Liquid in PBS containing 50% glycerol, 0.5% BSA and 0.02% sodium azide.
<b>Source</b>	Polyclonal, Rabbit,IgG
<b>Purification</b>	The antibody was affinity-purified from rabbit antiserum by affinity-chromatography using epitope-specific immunogen.
<b>Dilution</b>	WB: 1/500 - 1/2000. IHC: 1/100 - 1/300. ELISA: 1/20000.. IF 1:50-200
<b>Concentration</b>	1 mg/ml
<b>Purity</b>	≥90%
<b>Storage Stability</b>	-20°C/1 year
<b>Synonyms</b>	ZNF436; KIAA1710; Zinc finger protein 436
<b>Observed Band</b>	50kD
<b>Cell Pathway</b>	Nucleus .
<b>Tissue Specificity</b>	Expressed in fetal brain, heart, liver, spleen, bladder, lung, skin, skeletal muscle, stomach and pancreas.
<b>Function</b>	function:May be a transcriptional repressor.,similarity:Belongs to the krueppel C2H2-type zinc-finger protein family.,similarity:Contains 1 KRAB domain.,similarity:Contains 12 C2H2-type zinc fingers.,tissue specificity:Expressed in fetal brain, heart, liver, spleen, bladder, lung, skin, skeletal muscle, stomach and pancreas.,
<b>Background</b>	function:May be a transcriptional repressor.,similarity:Belongs to the krueppel C2H2-type zinc-finger protein family.,similarity:Contains 1 KRAB domain.,similarity:Contains 12 C2H2-type zinc fingers.,tissue specificity:Expressed in fetal brain, heart, liver, spleen, bladder, lung, skin, skeletal muscle, stomach and pancreas.,
<b>matters needing attention</b>	Avoid repeated freezing and thawing!



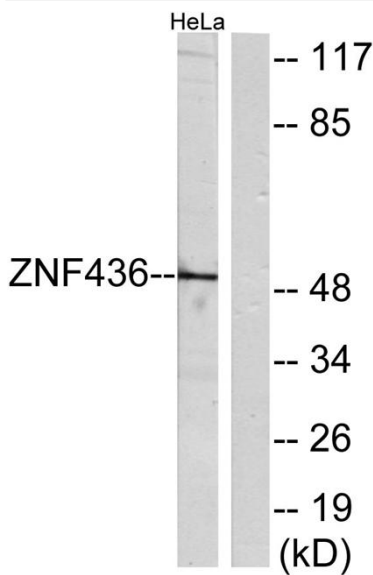
### Usage suggestions

This product can be used in immunological reaction related experiments. For more information, please consult technical personnel.

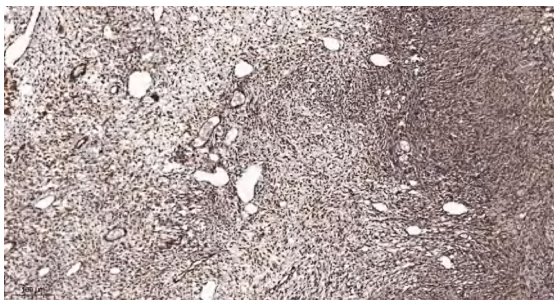
## Products Images



Western Blot analysis of various cells using ZNF436 Polyclonal Antibody. Secondary antibody(catalog#:RS0002) was diluted at 1:20000 cells nucleus extracted by Minute TM Cytoplasmic and Nuclear Fractionation kit (SC-003,Inventbiotech,MN,USA).



Western blot analysis of lysates from HeLa cells, using ZNF436 Antibody. The lane on the right is blocked with the synthesized peptide.



Immunohistochemical analysis of paraffin-embedded human oophoroma. 1, Antibody was diluted at 1:200(4° overnight). 2, Tris-EDTA,pH9.0 was used for antigen retrieval. 3,Secondary antibody was diluted at 1:200(room temperature, 45min).